



## SEBA HDA-Pro

### Hydrological Digital Assistant

- Operating system Windows® 10 Enterprise LTSC
- Handy and robust
- Configuration and read-out of data logger
- Visualization of data in hydrographs and lists
- Discharge measurements in combination with mobile measurement systems
- With off-road and street navigation using integrated GPS accurate mapping and surveying

# Hydrological Digital Assistant - HDA-Pro

The latest HDA-Pro is the multi-function tablet for the water resources management sector and represents the generation of mobile PC performance. Impact-resistant, handy, lightweight and waterproof – the ideal technical characteristics for managing numerous tasks in the field. All up-to-date PC software is not only available in the office but also at site for efficient field operation.

In conjunction with the ConfigPC operating software, all data loggers in the SEBA product family can be easily parameterized and read out, and the DEMASvis evaluation software is used to

visualize time series in the form of hydrographs and lists in a clear display.

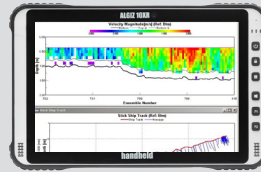
With the integrated GPS combined with user-friendly route planning software packages, the HDA-Pro takes you directly to your measuring sites.

The Windows tablet is also the perfect assistant for mobile flow measurement with the ADCP measuring boats from RDI-Teledyne (Stream-Pro, River-Pro, River-Ray) or simply for the acquisition of vane measurements in conjunction with the Windows evaluation software „Q4“.

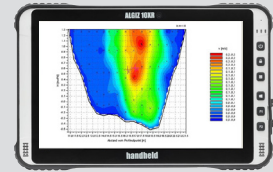
Operating and evaluation software „SEBAConfig“



Evaluation software „WinRiver II“ for ADCP measuring boats for mobile flow measurement



Software Q4 for the evaluation of mobile flow measurements



## Technical data

<b>Operating System:</b>	Windows® 10 Enterprise LTSC (64bit)
<b>Processor:</b>	Intel Elkhart lake Atom® x6413E 1.50 GHz (3.00 GHz boost) 64-Bit Quad-Core
<b>RAM:</b>	8 GB
<b>Hard Disk:</b>	128 GB
<b>Screen:</b>	10.1" capacitive multi-touch 1920×1200 pixels Sunlight readable, 850 nits Glove/rain mode Chemically hardened glass
<b>Keyboard/Keypad:</b>	Power, Touch mode, Menu, Home, F1, F2
<b>Protection class:</b>	IP 65 / MIL-STD-810G
<b>Battery:</b>	Replaceable battery: - Standard battery: 11.55 V 3520 mAh (40.66 Wh) Hot-swappable - Extended battery: 10.8 V 6700 mAh (72.4 Wh) Hot-swappable
<b>Operating temperature:</b>	-20 °C ... +60 °C (-4 °F ... +140 °F)
<b>Connections:</b>	5.5 mm DC-In Barrel Power Jack 1 x USB C 3.0 supports charging and display connection 1 x USB C 3.0 Output 5V/3A 1 x USB A 3.0 Docking port 1 x Micro SDXC 1 x Micro SIM
<b>Size:</b>	282 x 182 x 26 mm
<b>Weight:</b>	1250 g
<b>Accessories:</b>	on request



*The right is reserved to change or amend the foregoing technical specification without prior notice*

### Contact:

Virtual Hydromet | [vhydromet@yahoo.com](mailto:vhydromet@yahoo.com) | +91-9412072697